

# Young Vic Visual Story

The Young Vic is a theatre in London near **Waterloo** and **Southwark** stations. You might come to the Young Vic to see a show, take part in a workshop, or to talk to our box office.



This is what the Young Vic looks like from the outside. There are tables to sit at outside and two doors to enter.



If you arrive before a show is starting there may be a lot of people outside. You may have to wait in a queue to go into the theatre and it can be quite **busy** and **noisy**.

# Young Vic



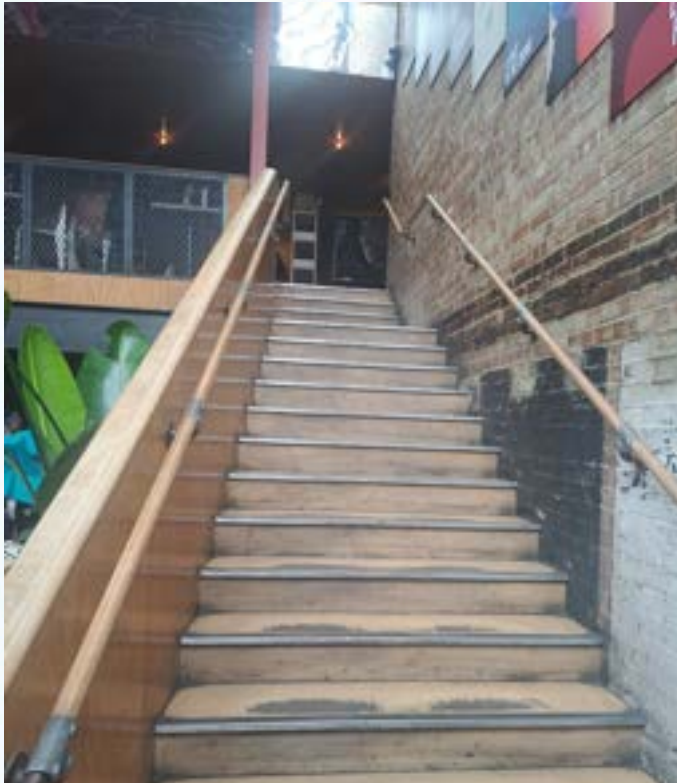
Through the doors is the **Box Office**. You can pick up ear defenders, hearing loops, and audio description headsets here before the show. It can be quite **busy** and **noisy** here before a show starts.



On the left is the entrance to the **bar**. This area may be **noisy** and **busy**, and may **smell** of food or alcohol. You can buy food and drinks here before or after the show. If there is an interval, you can come to the bar during that too. There is another bar upstairs.



# Young Vic



Also on your left will be the **stairs**. There are 16 steps in total. You can go up these to get to your seats if you are sat upstairs. Your ticket will say if your seat is upstairs or downstairs. There are toilets and another bar upstairs.



Straight ahead of you on your right is a **lift**. You can use this to get to your seats if you are sat upstairs. Your ticket will say if your seat is upstairs or downstairs. There are toilets and another bar upstairs.

# Young Vic



At the back of the bar are the **toilets**. You might have to queue for these and they may sometimes be a bit **smelly**. There are more toilets in the same place upstairs.



At the top of the stairs on the right is the “Marie McKenna Room”. This room functions as our **Chill Out Space**, which is open during Relaxed and Sensory Adapted performances. This room will have a sign on the door letting people know when it is open. If the chill out space is open, you can go in at any time if you want a break.

# Young Vic



There may be other people in the chill out space, but you don't have to talk to them if you don't want to.

Inside the Chill Out Space will be:

- A sofa
- two bean bags
- Chairs
- Weighted blankets
- Ear defenders you can put on if things are too loud
- A variety of fidget toys (please don't take these with you when you leave the room)

## **SITTING DOWN**

When you are ready to take your seat for the show, check your ticket to find out if you are sat upstairs or downstairs. If you are seeing a show in the Maria or the Clare, please skip down to page 8.

If you are seeing a show in the Main House, the auditorium doors will be on your **right**.



# The Main House



If you are sat **upstairs**, use the stairs or the lift to go to the first floor and follow the sign for the show you are seeing. The auditorium doors look like this.



If you are sat **downstairs**, head straight from the entrance and then turn right to get to the auditorium doors. The auditorium doors look like this.

# Young Vic



When you get to the auditorium doors, an usher will scan your **ticket**. Our ushers wear red t-shirts or fleeces with the Young Vic logo. Your ticket will either be on your phone in an email or printed on a piece of paper.



You will then walk into the **auditorium** where the seats are. This will be a space with a stage in front or in the middle.



In the auditorium, an usher will look at your ticket and tell you where your seats are. The number on your ticket tells you where you have to sit.

If you are seeing a show in the Maria or the Clare Theatres, the auditorium doors will be on your **right**.

## The Maria



This is what the Maria looks like inside.

## The Clare



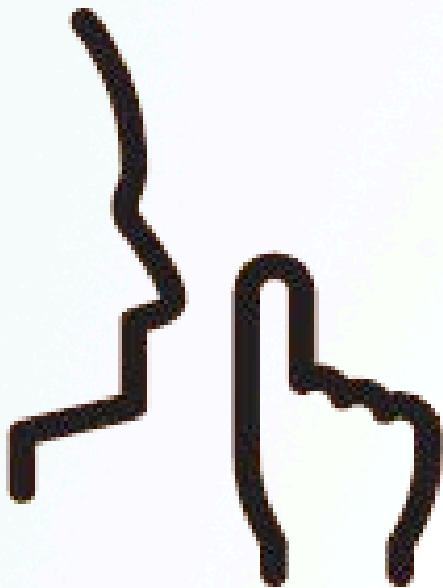
This is what the Clare looks like inside.



## The Show

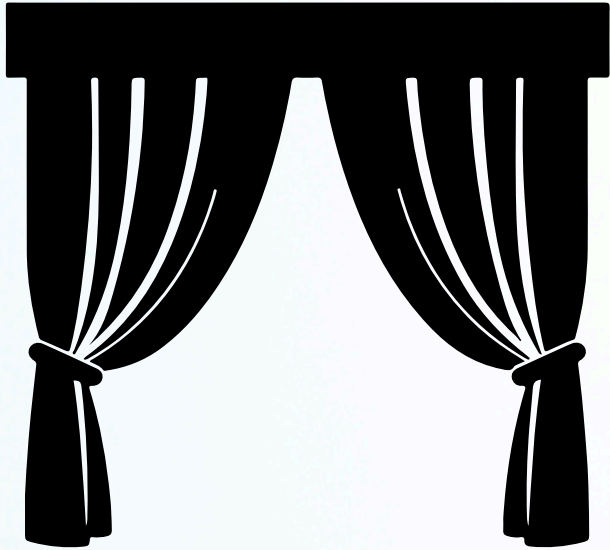


When you get to your seats you can sit down and relax. There will be lots of other people sitting near you and it may be quite **noisy**. If you have a phone, please turn it off now or put it on silent.

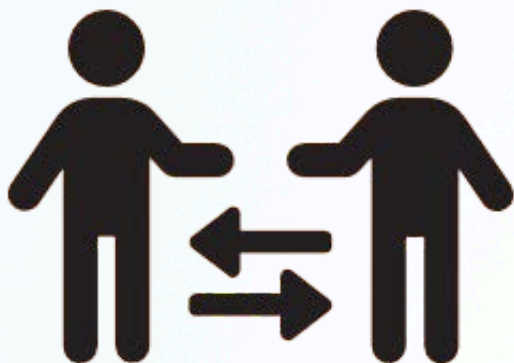


When it is time for the show to start, the theatre will get **darker**, and everyone will be **quiet**.

During Relaxed and Sensory Adapted performances, you can make noise and move around as you need to.

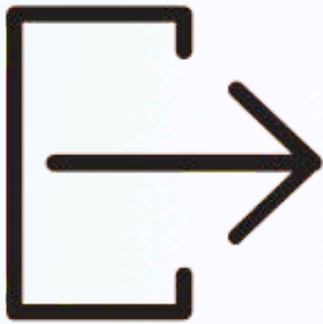


The show will then start. Unless you are at a Sensory Adapted performance, it will likely have loud **sounds** and changing **lights**. To find out more about what the show will be like, read the pre-show document on the show webpage.



The people in a show onstage are called **actors**. If the actors ever seem upset, remember they are just pretending and nothing bad is happening to them. If the show gets too loud or overwhelming, you can use ear defenders.





If you are at a Relaxed or Sensory Adapted performance, you can leave to go to the **Chill Out Space** at any point. If you're not sure how to get there, you can ask an usher and they'll be happy to help.

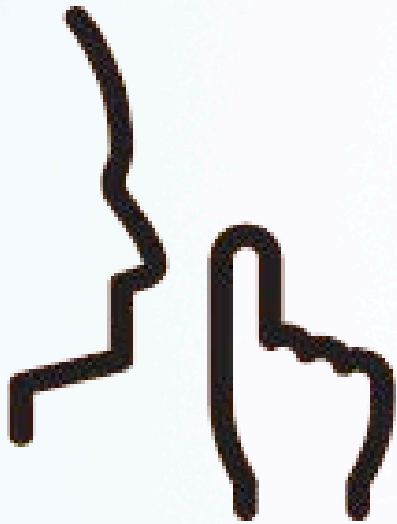


In the middle of the show, there may be a break called an **interval**. During the interval you can:

- Go to the toilet
- Buy food or drink from the bar
- stay in your seat if you want



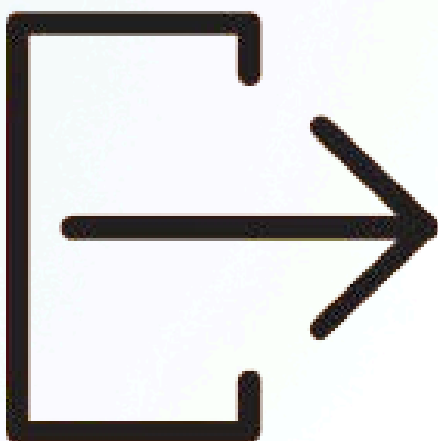
# Young Vic



After the interval, everyone will come back and sit in their seats again. It will get darker and quieter just like at the beginning of the show. The actors will come back onstage and the show will continue.



At the end of the show, people will **clap**. Some people may stand up to show the actors that they liked the show. You're welcome to clap, but you don't have to.



After the show is over, you will leave the theatre. You might not leave the same way that you came in.

If you have any questions about the information in this document, please contact our Box Office by email on [boxoffice@youngvic.org](mailto:boxoffice@youngvic.org) or by phone on 020 7922 2922 and they will be happy to help you.

**We hope you have a lovely time at the Young  
Vic!**